



**Reported and Edited by
Linda Moulton Howe**

REAL X-FILES

QUICK SEARCH

Share: Digg Facebook StumbleUpon

HEADLINES

ARCHIVE

ENVIRONMENT

▶ REAL X-FILES

SCIENCE

ABOUT US

ADVERTISE

CONTACT US

CONTRIBUTORS

EARTHEILES SHOP

SEARCH IN DEPTH

SUBSCRIPTION

LOGIN

LOGOUT

HELP

Printer Friendly
Page

Earthfiles, news category.

Part 1: An Alleged 1953 UFO Crash and Burial Near Garrison, Utah

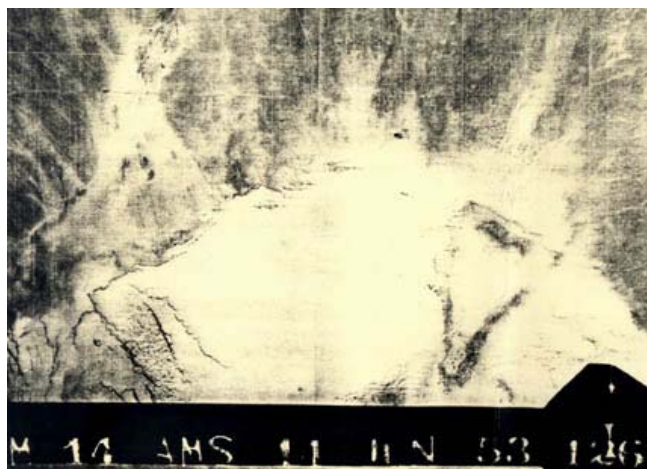
© 2005 by Linda Moulton Howe

November 10, 2005 - Fifty-two years ago on May 20, 1953, it's been said by a variety of sources that some kind of unidentified aerial craft allegedly crashed in a desert site near Kingman, Arizona. Follow the red arrow in the map below from Kingman to the yellow marked location two hundred miles straight north. The yellow marks a dry lakebed east of Fishlake National Forest which the U. S. government photographed in a grid pattern on June 11, 1953.



Red arrow points 200 miles straight north from Kingman, Arizona, to the yellow-colored DRES facility near alleged lakebed crash site, perhaps in May 1953.

Two dozen high altitude photographs were taken in a grid pattern of a large triangular feature in the dry lakebed near a government facility known as the Desert Research Experimental Station, or D.R.E.S. The triangle measured approximately 4,400 feet long and 2,700 feet wide. The measurements are from a 1999 geologist's analytical report.



"M 14 AMS 11 June 53 126." Aerial photograph taken on June 11, 1953, one of two dozen all focused on the region of the triangle feature which measures 4,400 feet long by 2,700 feet wide.

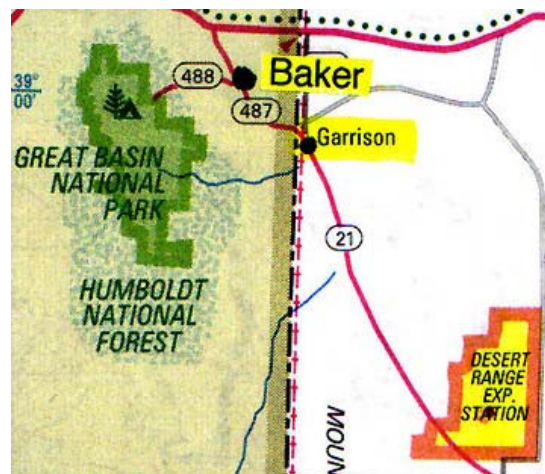
The location of this unusual triangle feature is 175 miles south of the highly classified Dugway Proving Grounds. At least one former United States Air Force pilot says he has firsthand knowledge that a large aerial vehicle *not from this world* impacted in 1953 where

the triangle was dug to bury the craft - and perhaps to provide a permanent marker in the lakebed for unknown purposes.



Dugway Proving Grounds and its highly classified test center are 175 miles north of the DRES facility and the odd triangular crash site. Dugway is south of Salt Lake City, Utah.

The nearest small town to the lake bed is Garrison, Utah. A few miles beyond is Baker, Nevada, where at least one local resident remembers a vivid explosion of something in the direction of the lakebed around 1953.



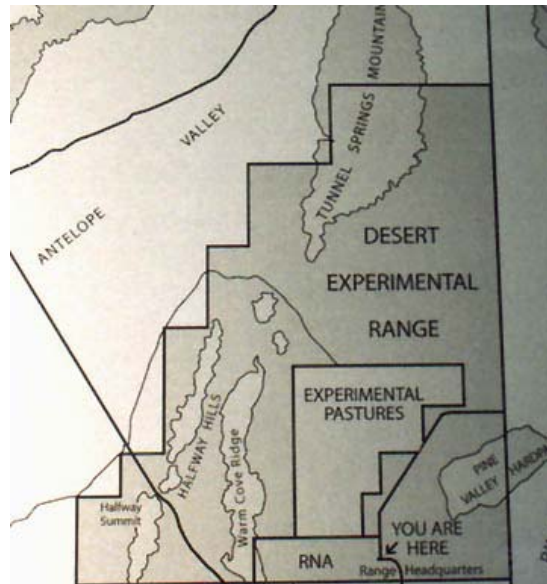
Garrison, Utah is 30 miles northwest of the DRES facility. Baker, Nevada, is ten miles beyond Garrison.

On July 16, 2005, I'm standing inside the odd triangle feature in the lakebed. Three miles away beneath the yellow arrow is the U. S. Forest Service's Desert Research Experimental Station, DRES.



Linda standing inside lakebed triangle on July 16, 2005. Arrow points to DRES facility three miles away, highlighted by yellow arrow. Photograph by Steve Jones.

The Desert Experimental Research Range was established in 1933 by President Herbert Hoover "as an agricultural range experiment station," covering 87 square miles.



Map of the DRES's 87 square miles featured in plaque at DRES facility which was established in 1933 by President Herbert Hoover. Photograph by Linda Moulton Howe.

According to U. S. government history about the site, range lands during the severe drought years of the 1930s had deteriorated, affecting survival of livestock and ranchers. No one knew how to manage desert plants, so the Desert Experimental Range was created to learn.



Dry, cracked lakebed inside triangle near DRES on July 17, 2005. Photograph © 2005 by Linda Moulton Howe.

In 1933, the Civilian Conservation Corps, or CCC, built the DRES facility where the

yellow arrow points below. 135 miles of fence was also built by the CCC to mark the boundary of DRES using hundreds of wire rolls and over 40,000 wood posts cut by hand. Most of the original posts still stand a testament to the dry, high desert climate there.



Road and 1933-built fence to lakebed triangle. Arrow points to DRES.
Photograph © 2005 by Linda Moulton Howe.

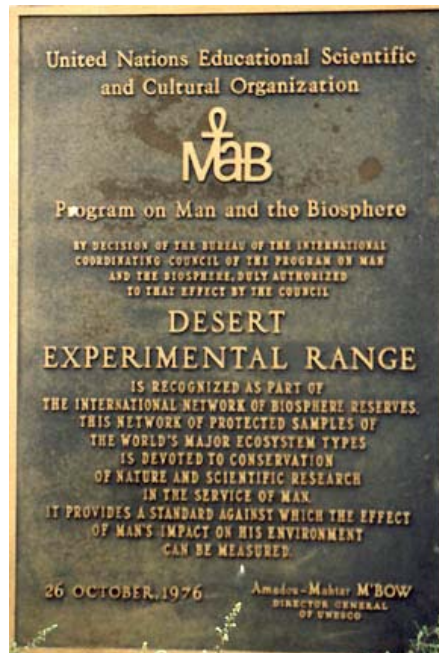
By 1935, the CCC built these two stone obelisks as a gate entrance to DRES, indicated by the yellow arrow.



Stone obelisk gate to DRES, July 17, 2005. Photograph © 2005 by Linda Moulton Howe.

Two and a half decades later on October 26, 1976, the United Nations Educational Scientific and Cultural Organization formally dedicated the Desert Experimental Range as part of the "international network of biosphere reserves. This network of protected samples of the world's major ecosystem types is devoted to conservation of nature and scientific research in the service of man. It provides a standard which the effect of man's impact on his environment can be measured."

Ordered by Amadon-Mahtai M'Bow, Director General of UNESCO on October 26, 1976, under the decision of the Bureau of the International Coordinating Council of the "Program On Man and the Biosphere." Exactly why this occurred and what the legal implications are in making DRES a U. N. biosphere are still not clear.



United Nations Biosphere Reserve Designation for DRES by UNESCO on October 26, 1976. Plaque built into stone at driveway entrance to DRES buildings. Photograph © 2005 by Linda Moulton Howe.

Today in 2005 from the outside, the DRES facility looks run down with paint peeling badly on all the buildings. But a strange juxtaposition to all the peeling paint and boarded up windows are new padlocks and many new doors with brand new solid locks. [Editor's Note: Stan Kitchen, current manager of the DRES installation since 1999, says he has been forced to put on new doors and locks because vandals have broken into the facility. But he has no knowledge about the triangular feature in the lakebed.]



Weed-filled circular driveway ringed by deteriorating DRES buildings and empty flagpole. July 17, 2005 photograph © by Linda Moulton Howe.



Peeling paint and boarded up DRES buildings. July 17, 2005 photograph © by Linda Moulton Howe.



New lock hardware on peeling paint at DRES, July 17, 2005.
 Photograph © by Linda Moulton Howe.



New lock on brand new door surrounded by peeling paint, July 17, 2005.
 Photograph © 2005 by Linda Moulton Howe.

The new doors and locks stand out as peculiar amid all the peeling paint and unkempt look of the buildings and grounds. There is also fresh weather caulking around the doors.



Above: New door and locks surrounded by peeling paint.
Below: Fresh weather caulking on peeling paint around new door, July 17, 2005.
 Photograph © 2005 by Linda Moulton Howe.



From behind one of the decrepit-looking DRES buildings, a new mono-directional antenna is powered by a new solar energy array constructed several hundred yards from the DRES facility.



Above and below: Mono-directional antenna powered by new solar energy array, July 17, 2005.
Photographs © 2005 by Linda Moulton Howe.



Continued in **Part 2** - An Intelligence Safe House Hiding in Plain Sight?

More information:

Also, see other Earthfiles UFO crash retrieval reports:

- 07/29/2005 -- **Bentwaters and Rendlesham Forest Mystery Beyond December 1980**
- 04/14/2005 -- **"Battle of Los Angeles" On February 25, 1942**
- 02/13/2005 -- **Part 1: UFO Crash/Retrievals: Status Report IV - Fatal Encounter At Ft. Dix-McGuire**
- 12/30/2004 -- **September 12, 1952: America's "Secret War"? Part 1: UFO Retrieval in Flatwoods, WV**
- 12/30/2004 -- **September 12, 1952: America's "Secret War"? Part 2: USAF Starfire Disappeared**
- 12/30/2004 -- **September 12, 1952: America's "Secret War"? Part 3: Nuclear Physicist Stanton Friedman**
- 12/22/2004 -- **Part 2: "Reasons Why U.S. Government CAN'T Release Truth About UFOs!"**
- 12/22/2004 -- **Part 1: "Reasons Why U.S. Government CAN'T Release Truth About UFOs!"**
- 12/10/2004 -- **Part 4: "Peculiar Phenomena," V-2 Rockets - and UFOB Retaliation?**
- 12/10/2004 -- **Part 3: "Peculiar Phenomena," V-2 Rockets - and UFOB Retaliation?**
- 12/07/2004 -- **Part 2: "Peculiar Phenomena," V-2 Rockets - and UFOB Retaliation?**
- 12/04/2004 -- **Part 1: "Peculiar Phenomena," V-2 Rockets - and UFOB Retaliation?**
- 11/12/2004 -- **Strange Metal Pieces from Plains of San Agustin Alleged UFO Crash Site Analyzed.**
- 08/18/2004 -- **New Mexico Gov. Bill Richardson Wants More Investigation of 1947 Roswell UFO Crash**
- 06/14/2004 -- **Part 3 - The Danger of Time Loops and A Wormhole on Frenchman Mountain, Nevada**
- 06/14/2004 -- **Part 2 - The Danger of Time Loops and A Wormhole on Frenchman Mountain, Nevada**
- 06/12/2004 -- **Part 1 - Field Trip with Microbiologist Dan Burisch to Frenchman Mountain, Nevada**
- 06/08/2004 -- **Part 3: Whistleblower Microbiologist Dan Burisch Interview on June 7, 2003**
- 05/19/2004 -- **Part 1: Whistleblower Microbiologist Dan Burisch Interview on June**

7, 2003

- 04/26/2004 -- **Update About Microbiologist Dan Burisch, Ph.D.**
- 03/26/2004 -- **Back Engineering ET Craft**
- 03/17/2004 -- **Part 2 - "Horrible Secret" in UFO Crash Retrievals Near Roswell, New Mexico, in July 1947?**
- 03/17/2004 -- **Part 1 - "Horrible Secret" in UFO Crash Retrievals Near Roswell, New Mexico, in July 1947?**
- 11/07/2003 -- **British UFO Crash Retrievals**

Credits

**Copyright © 1999 - 2009 by Linda Moulton Howe.
All Rights Reserved.
www.earthfiles.com
earthfiles@earthfiles.com**

Republication and redissemination of the contents of this
screen or any part of this website are expressly
prohibited without prior Earthfiles.com written consent.

**[Privacy Policy](#) | [Terms & Conditions](#)
[Refund Policy](#)**

**Copyright © 1999 - 2009, Earthfiles.com /DigitalEyeCandy.ca
All rights reserved.**

