



Part 3: Morphing UFO Over Levittown, PA - Scientific Research

© 2008 by Linda Moulton Howe

After exposure to the aerial object's glittering light energy, there were "respiration-related increases in the internal energy of the privet leaves 17 times normal and 15 times normal in the silver maple leaves." - Biophysicist W. C. Levengood Lab Report



Left: "Boomerang" version of mysterious aerial object that morphed into **middle** pink-colored disc. **Right:** The pink disc then flashed three oval, white lights on its bottom surface and "little squares of light" dropped like snow onto apartment yard and privet bush. Half a dozen sightings April through July 2008, Levittown, Pennsylvania. Image and drawings by resident and eyewitness.

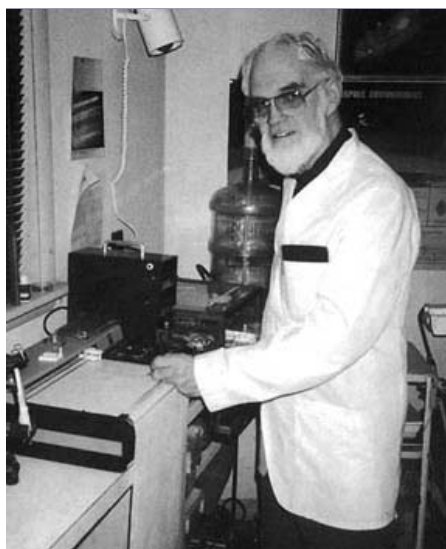


Privet bush about 15 feet high grows next to eyewitness's apartment back door in Levittown, Pennsylvania, where "little squares of light" first fell on June 12, 2008 - and two more times in July 2008 - from a pink-colored aerial disc and surrounded the privet bush and a silver maple tree about 65 feet away. Image © 2008 by Robert Gardner.

Return to **Part 1**

Return to **Part 2**

November 17, 2008 Grass Lake, Michigan - The biophysical and biochemical research by biophysicist W. C. Levengood continues with this laboratory report about somatic leaf growth anomalies in privet bush leaves exposed to energy dispersed from unidentified aerial craft over Levittown, Pennsylvania, apartment three times on June 12, July 10 and July 16, 2008.



W. C. Levengood, Biophysicist, in his Grass Lake, Michigan, laboratory. Photograph © by Linda Moulton Howe.

Developmental Abnormalities in Abscised Leaves

During the examination of the abscised group of privet leaves a development abnormality appeared in approximately two percent of the total population of 167 leaves. The heart shaped leaves in the upper photograph in Fig.5, are totally uncharacteristic of the normal, lance-shaped leaves shown for comparison in the bottom row. The larger leaf at the left side of the heart-shaped group has developed two clearly defined lobes, both of which have a central mid-vain.





Figure 5. **Top photo** - heart-shaped leaves show a somatic developmental abnormality in abscised privet leaves. The privet leaves in second row are normal. **Bottom photo** - black arrow above the center leaf bud points to a very small trace of anthocyanin. Arrow on right above privet leaf points to the absence of what should have been sharp tip of normal privet leaves. Thus, the somatic developmental anomaly that produced heart-shaped leaves occurred in early growth stage. These and all images © 2008 by W. C. Levengood, Pinelandia Biophysical Laboratory.

The appearance of this unusual, double lobed growth pattern indicates that the leaf must have been subjected to the energy beams weeks before the July 8, 2008 event, however this is consistent with the eyewitness report of repeated visitations of the energy beams. In the second sampling, Mr. Gardner included privet leaf buds from outer branches removed from the same general area as those in the original sample. Sections of these outer branches are shown in the bottom photo in Fig.5, along with leaves growing on them. The arrow at the top of the left branch, points to a spot of anthocyanin located at the very tip of the leaf bud.

A question now arises as to why cells at the tip of the bud are affected, while the remainder of the leaf bud complex is relatively unaffected? To answer this we have to consider the interaction between the basic geometric pattern of the leaf and the external energy beams. All organisms are constantly being influenced by naturally occurring electric fields in the environment. These natural fields can induce very high electric potentials on objects that form a sharp point. If the potential at a point becomes greater than the electrostatic breakdown potential of air, discharge occurs, as for example in the formation of lightning.

A lightning bolt is an extreme form of plasma energy. More subtle forms of plasma discharge are brought to mind from the eyewitness accounts of the "sparkling" patterns of light. This suggests the presence of electrostatic breakdown around the edges of a much larger plasma complex. When the energy beam complex was imposed on the privet bush, electrostatic breakdown may have occurred at the pointed ends of the lance-shaped leaves, where the accumulation of charge density would be maximum.

The arrow over the leaf in the bottom photo in Fig.5, points to a very small spot of anthocyanin, at what appears to be the initial stages of forming the heart shape abnormality. The presence of anthocyanin is not the cause of the altered leaf shape, but rather the result of the external electrostatic field. That the formation and migration of anthocyanin can be induced in living plant tissues by an electric field was demonstrated in 1967 experiments conducted at the Pinelandia laboratory. For example, in Fig.6 are data demonstrating the ionophoretic movement of anthocyanin in corn (*Zea mays*) seeds. From the linear regression curve in Fig.6, we find the rate of anthocyanin migration to be on the order of 0.81 mm/hr. As shown in Fig.7, the migration of anthocyanin in the tree leaves exposed to the energy-beams also progresses through the plant cells in what appears to be a very uniform pattern. The three photomicrographs (at 40x mag.) show cells around a mid-vein in one of the energy beam exposed maple leaves. The upper photo was taken near the tip of the leaf where no red-brown coloration was present. The middle photo was taken about one cm below, and the arrow illustrates the sharp boundary between the chlorophyll green and anthocyanin containing tissue. In the bottom photo the presence of anthocyanin is apparent in the lateral veins branching off from the central mid vein. This gradient of anthocyanin suggests that its direction of migration was from the petiole at the base of the leaf to the pointed tip end. From Fig.6 it may be seen that this scheme of movement is in accord with the positively charged anthocyanin molecules migrating toward a negatively charged region induced by the energy beam acting on the tissue at the tip of the leaf.

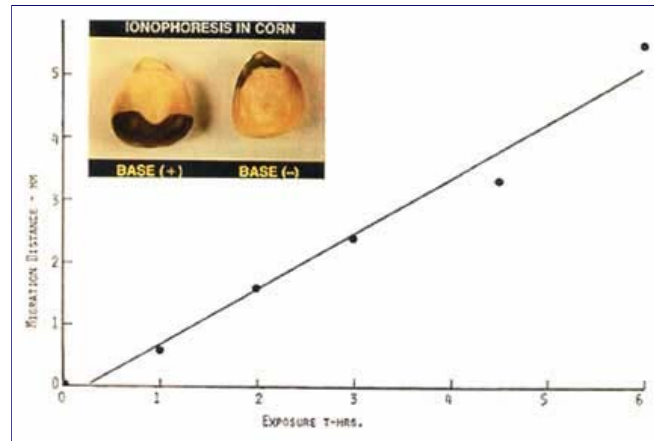
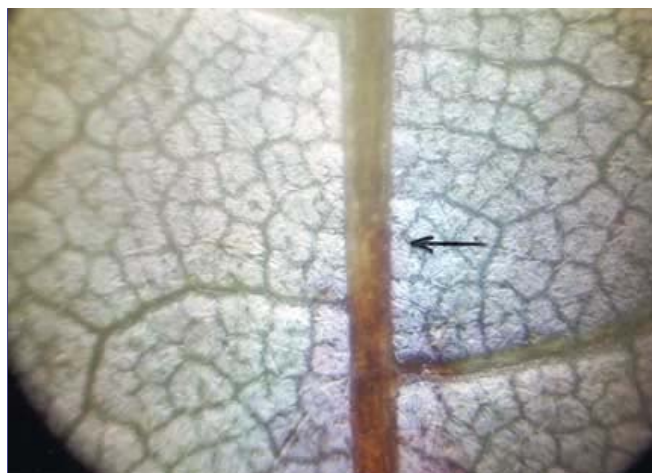


Figure 6. Data taken during the migration of anthocyanin within corn seeds placed in an electric field (from 1967 research conducted at the Pinelandia Biophysical Laboratory). Migration distance of anthocyanin induced by electric field in corn is measured vertically on left and exposure time in hours is marked off horizontally.

Anthocyanin Migration Within Affected Silver Maple Leaf, Levittown



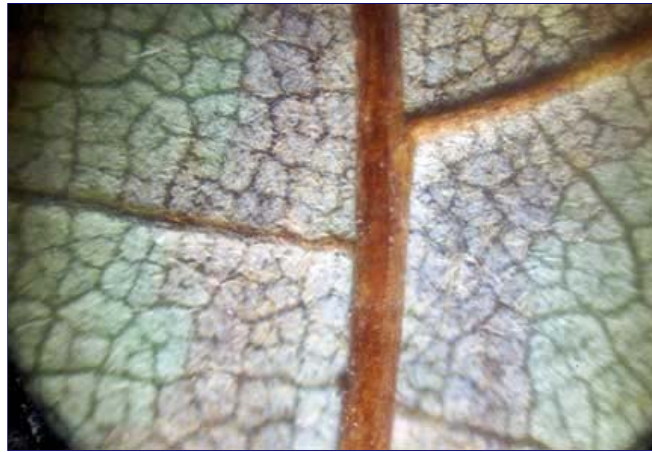


Figure 7. Photomicrographs (40x) showing details of the anthocyanin migration within Levittown energy-affected silver maple leaf. **Upper photo** - near top of green leaf in region free of anthocyanin pigment. **Center photo** - about one centimeter below, with arrow showing the line of demarcation between green and pigment regions. **Lower photo** - about 2 centimeters farther down near base of leaf. In this area, there is pronounced anthocyanin pigment formation both in the central mid-vein and in the lateral branching veins.

Internal Energy Changes in the Levittown Privet and Silver Maple Leaves

Internal Energy Changes in the Philadelphia Tree Leaves

In 1988, a method was discovered at the Pinelandia Biophysics Lab., which provided detailed information related to internal energies involved in redox (reduction-oxidation) and respiration related processes in plants. This work was published in the peer reviewed scientific literature [W.C. Levengood, *Redox-Responsive Electrodes Applied During Plant Morphogenesis*, Journal of Bioelectrochemistry and Bioenergetics, 19, pp. 461-476 (1988)]. Subsequent research led to the successful development of new protocols for examining the kinetics of molecular mechanisms involved in plant respiration.

By making slight changes in the 1988 protocols it became possible to detect signals or pulses of electric currents spontaneously organized within living systems. After several years of work it became apparent that this methodology could be reliably utilized to determine the degree that external perturbations influenced the internal energies within living systems. Here, we have the situation where information concerning the internal energy states of the affected leaves could provide knowledge related to metabolic changes produced by the energy beams.

The privet leaf used for the internal energy examination was taken from the excised group and it was apparent that it had total exposure to the energy beams. Its external appearance was identical to the one shown in the upper photo in Fig.1. A normal green leaf was removed from a branch and this acted as the control in the testing procedure. The routine protocol involves taking chart recorder traces at precise, 10 min. intervals. The recorded pulses are produced by spontaneously occurring Charge Density Plasma (CDP) currents (the details regarding the formation of these plasma pulses are beyond the scope of this report). The CDP pulses are taken over a 70 min. period and then plotted using a linear form of a time related asymptotic function.

The data from the normal green leaf control are shown in the upper plot in Fig.8, where the linear regression line gives an $r = 0.99$ linear regression coefficient. All fresh, green plants growing under normal conditions precisely follow this same energy pattern when the data are examined with this mathematical algorithm. The data in the bottom curve in Fig.8 were obtained with exactly the same procedural analysis as used with the control leaf. Here, the data tell us that the internal energy has been significantly altered to the point that it does not follow the linear model found in all normally developing plants. The negative values along the ordinate of the lower plot reveals that the ion balance within the cytoplasm of the affected leaf has been altered. When comparing the overall, or mean level of respiration related energy within these test leaves, we find that the affected leaf has 17-times greater internal energy than the control or normal leaf. When using this same test procedure an affected maple leaf was found to have 5-times the energy, compared with a normal (control) leaf. The magnitudes of the energy level in both the affected privet and maple leaves, were higher than any of the previous CDP studies conducted in this laboratory.

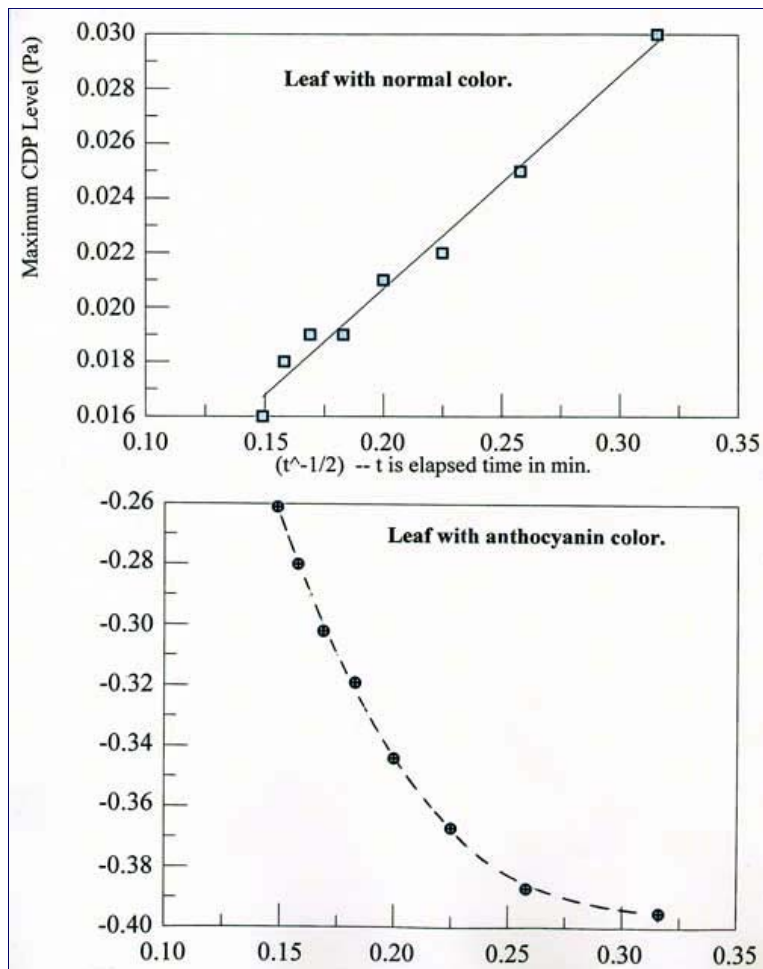


Figure 8. **Top plot** - Internal energy data in upper curve are from a normal unaffected privet leaf (control). The linear nature of this plot is characteristic of all species of normally developing green plants when examined with this exponential algorithm. **Bottom plot** - Internal energy data from a privet leaf that exhibits complete anthocyanin red-brown coloration. The curve depicts complete divergence of its internal energy characteristics when compared with the data obtained from the normal control leaf.

Summary:

Summary Comments

Reported here are the results from an investigation of very unusual energy beams reportedly imposed on a very large privet bush and two maple trees located in a suburban area in Philadelphia, Pa. A witness viewing these energy beams reported that they appeared in her yard six times during the months of June and July of this year (2008). The major energy beam induced alterations in the foliage of the privet bush and maple trees, are summarized as follows:

- 1) An abnormal increase in the metabolite abscisic acid, which produced premature leaf fall.
- 2) The over production of the plant pigment anthocyanin.
- 3) A developmental abnormality in privet foliage, which produced heart shaped leaves – totally uncharacteristic of the normal lance shaped leaves with pointed ends.
- 4) Respiration related increases in the internal energy of the privet leaves 17-times normal, and 15-times normal in the maple leaves.

W.C. Levengood
 Dr. W.C. Levengood
 Pinelandia Biophysics Laboratory
 4853 Wolf Lake Rd.
 Grass Lake, Michigan 49240

Continued in **Part 4:** Interview with Biophysicist W. C. Levensgood.

[Return to Part 1](#)

[Return to Part 2](#)

More Information:

I would appreciate hearing from other eyewitnesses of strange aerial light events in the United States and world. Please email me: earthfiles@earthfiles.com.

For further reports about unidentified aerial craft and non-human intelligences, please see my books and documentaries in the **Earthfiles Shop**.

For other unusual aerial light reports, please see **Earthfiles Archive**, of which only a few titles are listed below:

- 11/07/2008 — U. S. Border Patrol Agent Reports Camouflaged Underground Bases in New Mexico and Beam "Swallowed Up" California Airplane
- 11/05/2008 — Part 7: Army/CIA Unit Studied the Real UFO Blue Book Cases
- 10/30/2008 — More Encounters with Glowing Humanoids, Green Orbs, Strange Aerial Lights and "Thunderbirds"
- 10/10/2008 — Part 1: Two Pennsylvania Hunters Encountered Strange Lights and Lime Green, Glowing Humanoid on Oct. 4
- 10/03/2008 — Mother and Son Watched Cow Rise In Golden-Orange Beam to Disc
- 10/03/2008 — Part 6: Army/CIA Unit Studied the Real UFO Blue Book Cases
- 09/29/2008 — Half Cat and Other Animal Mutilations Around the World and East of Palm Springs, California
- 09/24/2008 — Part 5: Army/CIA Unit Studied the Real UFO Blue Book Cases
- 09/23/2008 — AH-1W SuperCobra Helicopters and Glowing Sphere
- 09/12/2008 — Part 4: Army/CIA Unit Studied the Real UFO Blue Book Cases
- 09/07/2008 — Part 3: Army/CIA Unit Studied the Real UFO Blue Book Cases
- 09/02/2008 — Part 2: Army/CIA Unit Studied the Real UFO Blue Book Cases
- 08/27/2008 — Part 1: Army/CIA Unit Studied the Real UFO Blue Book Cases
- 08/26/2008 — Update: Earthfiles Viewer Comments About UFOs and 14th Century Black Death
- 08/22/2008 — UFOs and 14th Century Black Death
- 08/12/2008 — Part 2: Rise of Fourth Reich -Where Is the Nazi "Die Glocke?"
- 08/09/2008 — Part 5: Original Carbon of Scorched Memo, Project JEHOVAH and Physicists Oppenheimer and Einstein
- 08/06/2008 — Updated - Part 3: Original Carbon of Scorched Memo Links Government UFO Cover-Up and JFK Assassination
- 08/06/2008 — Part 4: Original Carbon of Scorched Memo Links Government UFO Cover-Up and JFK Assassination
- 08/05/2008 — Perchlorate Discovery by Phoenix Lander Does Not End Search for Life On Mars
- 08/01/2008 — Part 1: Rise of Fourth Reich in America?
- 07/26/2008 — Part 1: Why No Military Response to Radar Unknown Headed to Bush Crawford Ranch on January 8, 2008?
- 07/25/2008 — Apollo Astronaut Edgar Mitchell Says Governments Covering Up E. T.s
- 07/13/2008 — Part 6: Insights from An Experienter with Greys and Blond Humanoids
- 07/12/2008 — Updated - Part 2: Roswell Rock Matches August 2, 1996, U. K. Crop Pattern
- 07/11/2008 — Updated - Part 1: Roswell Rock Matches August 2, 1996, U. K. Crop Pattern
- 07/09/2008 — Part 5: Insights from An Experienter with Greys and Blond Humanoids
- 06/27/2008 — More Military Sightings of UFOs in U. K.
- 06/26/2008 — Part 4: Insights from An Experienter with Greys and Blond Humanoids
- 06/15/2008 — Part 3: Insights from An Experienter with Greys and Blond Humanoids
- 06/13/2008 — Part 2: Insights from An Experienter with Greys and Blond Humanoids
- 06/12/2008 — Barbury Castle Pi Formation: "Perfectly Clean" in Muddy, Rain-Soaked Field
- 06/08/2008 — 2008 Barbury Castle Pattern is Pi to 3.14159265358
- 06/06/2008 — Updated: Mysterious Crash Near Needles, California
- 06/06/2008 — Aerial Ring with Antennas in Southern Ohio Forest and Chicago Dragonfly Drone
- 05/22/2008 — Pregnant Cow Mutilation in Stockholm, Saskatchewan, Canada
- 05/20/2008 — High Strangeness in Kelowna, British Columbia, Canada
- 05/06/2008 — Viewer Comments on Decatur, Alabama, White Sphere Incident
- 05/06/2008 — What Are the Strange "Pearls" in Google Map Images?
- 04/29/2008 — Part 1: Insights from An Experienter with Greys and Blond Humanoids
- 04/24/2008 — Strange Aerial Lights Like Texas - But Now Photographed in Indiana, Illinois, and Massachusetts
- 04/23/2008 — Four Red, Unidentified Lights Change Patterns Over North Phoenix
- 04/07/2008 — Part 1: Bizarre Objects Caught by Illinois and Missouri Game Trail Cameras
- 04/07/2008 — Part 2: Bizarre Objects Caught by Illinois and Missouri Game Trail Cameras
- 04/06/2008 — Final Part 10: Real X-File, Source Unknown
- 04/02/2008 — Part 9 - Real X-File, Source Unknown
- 03/31/2008 — Mysterious Aerial Spheres: Letters to Earthfiles
- 03/30/2008 — Part 8 - Real X-File, Source Unknown
- 03/28/2008 — Deer Mutilation in Longs, South Carolina, Two Helicopters and Large, White Sphere

- 03/20/2008 — Part 7 - Real X-File, Source Unknown
- 03/15/2008 — Part 6 - Real X-File, Source Unknown
- 03/08/2008 — Part 5: Real X-File, Source Unknown
- 03/07/2008 — Mysterious Aerial "Drones" - Oklahoma and Arkansas
- 03/04/2008 — Part 4: Real X-File, Source Unknown
- 03/03/2008 — Updated Part 1: Real X-File, Source Unknown
- 03/02/2008 — Part 2: Real X-File, Source Unknown
- 03/02/2008 — Part 3: Real X-File, Source Unknown
- 02/26/2008 — Viewer Comments About Infrared Cameras, Aerial Symbols and Lights
- 02/22/2008 — Updated: Three Eyewitnesses in Selden, Texas, Saw Two, Large Rectangles of "White Flames" in Sky
- 02/22/2008 — Updated: More Aerial "Symbols" Photographed Over Dublin, Texas
- 02/22/2008 — Abductee Jim Sparks Comments On Alien Symbol Technology
- 02/14/2008 — Update: Mysterious Symbols Projected in Night Sky by Aerial Disc Near Stephenville, Texas, Local Airport
- 02/08/2008 — Law Officers Describe Unidentified Shape-Shifting Aerial Craft in Stephenville, Texas, Region
- 01/28/2008 — Updated 01-28-08: Viewer Letters About Aerial Craft and Military Flyovers Above Dublin, Stephenville and Selden, Texas
- 01/24/2008 — Part 17, Final: In League With A UFO, Interview with Lou Baldin
- 01/18/2008 — Updated: Huge Aerial Craft Over Dublin, Texas, "Longer Than 3 Football Fields"
- 01/15/2008 — Updated: More Sky Spiral Mysteries in Iraq, Canada and Germany
- 01/13/2008 — Part 16: In League With A UFO, Interview with Lou Baldin
- 01/11/2008 — Canadian "Disc" and Smoke Spiral Still A Mystery
- 01/07/2008 — Part 15: In League With A UFO
- 01/05/2008 — Part 14: In League With A UFO
- 01/02/2008 — Part 13: In League With A UFO
- 12/29/2007 — Part 12: In League With A UFO
- 12/27/2007 — Updated - Part 11: In League With A UFO
- 12/22/2007 — Part 10: In League With A UFO
- 12/20/2007 — Updated: Viewer Letters About Secret American Military Space Program
- 12/18/2007 — Part 9: In League With A UFO
- 12/16/2007 — Part 8: In League With A UFO
- 12/14/2007 — Part 7: In League With A UFO
- 12/12/2007 — Part 6: In League With A UFO
- 12/11/2007 — More Confirmation of May 1974 Discs in Albuquerque and Huge Cylinder Craft At White Sands Proving Ground.
- 12/08/2007 — Another Eyewitness to Glowing Disc and Military Security in Albuquerque, New Mexico
- 12/07/2007 — Part 2: Secret American Military Space Program?
- 12/03/2007 — Part 5: In League With A UFO
- 12/01/2007 — Part 1: Secret American Military Space Program?
- 11/29/2007 — Part 1: Glowing Disc Encounter with Military in Albuquerque, NM
- 11/29/2007 — Part 2: Glowing Disc Encounter with Military in Albuquerque, NM
- 11/29/2007 — Part 3: Glowing Disc Encounter with Military in Albuquerque, NM
- 11/25/2007 — Part 4: In League With A UFO
- 11/21/2007 — Part 3: In League With A UFO
- 11/20/2007 — Do Black Budget Trillions Support A Secret American Space Program?
- 11/14/2007 — Part 2: In League With A UFO
- 11/08/2007 — More Unusual Animal Deaths
- 11/06/2007 — Part 1: In League With A UFO
- 10/31/2007 — Part 5: Elk Hunter Meets Non-Human
- 10/29/2007 — Part 4: Elk Hunter Meets Non-Human
- 10/25/2007 — Part 3: Elk Hunter Meets Non-Human
- 10/21/2007 — Viewer Comments About Big Triangles and Lights - In Conflict?
- 10/17/2007 — Updated: Half Cat Mutilations Persist in San Antonio, Texas
- 10/14/2007 — Part 2: Elk Hunter Meets Non-Human
- 10/08/2007 — Part 1: Elk Hunter Meets Non-Human
- 09/28/2007 — Earthfiles Mail About Cat Mutilations
- 09/26/2007 — Neatly Sliced Front Third of 14 Cats Found in Granbury, Texas
- 09/20/2007 — Part 2: Psi Spies - True Story of America's Psychic Warfare Program
- 09/16/2007 — Part 5: Military Insiders Comment About Zeta Reticuli and EBENS
- 09/14/2007 — Part 1: Psi Spies - True Story of America's Psychic Warfare Program
- 09/11/2007 — Part 4: Military Insiders Comment About Zeta Reticuli and EBENS
- 09/07/2007 — Part 3: Military Insiders Comment About Zeta Reticuli and EBENS
- 09/05/2007 — Part 2: Military Insiders Comment About Zeta Reticuli and EBENS
- 08/31/2007 — Part 1: Betty and Barney Hill: Captured!
- 08/31/2007 — Part 2: Betty and Barney Hill: Captured!
- 08/30/2007 — Part 1: Military Insiders Comment About Zeta Reticuli and EBENS
- 08/24/2007 — Orange-Red "Fiery" Aerial Spheres
- 08/17/2007 — Two Bulls and Several Cows Dead and Mutilated in Manitoba, Canada
- 08/01/2007 — Part 3, Non-Human Blonds, Greys and Big-Nosed, Cat-Eyed Lizards
- 07/31/2007 — Part 2, Non-Human Blonds, Greys and Big-Nosed, Cat-Eyed Lizards
- 07/28/2007 — Clarifications and Comments by Isaac
- 07/28/2007 — Mysterious Aerial Lights Over Stratford-upon-Avon, July 14, and Farnborough, Hampshire, on July 22, 2007
- 07/27/2007 — Updated: Part 1: 1,033-Foot-Long East Field Wheat Formation "Happened Within 90 Minutes."
- 07/26/2007 — Part 1, Non-Human Blonds, Lizards and Big-Nosed, Cat-Eyed Greys
- 07/23/2007 — 070707 East Field Wheat Formation: Viewer Comments
- 07/14/2007 — Schofield Barracks, Oahu, Hawaii - Huge, Lime Green Oval Craft Hovered Over Battalion Headquarters
- 07/13/2007 — Iowa Minister Reports Large "Crab/Scorpion" Creature Attacked Cow
- 06/26/2007 — Part 1: Explanation of the Recent "Strange Craft" Sightings
- 06/22/2007 — Dragonfly "Drone" Seen October 1995 in Arizona
- 06/18/2007 — Crop Circles On Rings and Three Mysterious Aerial Lights in Slovenia
- 06/17/2007 — More Big Basin, California, Bizarre "Drone" Images

- 06/15/2007 — Part 1: Yosemite National Park and Northridge, California, Aerial Dragonfly "Drones"
- 06/15/2007 — Part 2 - Star Wars Physicist Edward Teller, Outer Space Menace And Remotely Piloted Vehicles (RPVs)
- 06/13/2007 — Into the Unknown with George Noory
- 06/08/2007 — More Drone Photos and Other Eyewitnesses
- 05/30/2007 — Birmingham-Type "Drone" Seen At Barksdale AFB, Louisiana, in Mid-1980s
- 05/29/2007 — Final Part 7: Eyewitness Links Animal Mutilations to Non-Humans
- 05/28/2007 — Letters About Unidentified "Drone" Aerial Objects
- 05/25/2007 — Two More Eyewitnesses of Aerial "Drones" in 2005 and 2006
- 05/21/2007 — Updated: Odd Aerial "Drone"? Photographed Again Over Capitola, California
- 05/16/2007 — Updated: Odd Aerial "Drones"? Over Lake Tahoe and Central California
- 05/16/2007 — Updated: Engineer Comments About Odd Aerial "Drones"? Over Lake Tahoe and Central California
- 05/11/2007 — CIA Origin of National Enquirer?
- 04/20/2007 — 2006 Human Encounter with Translucent Entity
- 04/18/2007 — Part 1: Eyewitness Links Animal Mutilations to Non-Humans
- 03/16/2007 — Tenth Anniversary of March 1997 Phoenix Lights: What Was the 2-Mile-Long Triangular Craft?
- 03/14/2007 — Part 5: Mysterious Events At 2005 Tawmsmead Copse "Insectogram" Crop Formation
- 03/13/2007 — Part 4: Mysterious Events At 2005 Tawmsmead Copse "Insectogram" Crop Formation
- 03/09/2007 — Zones of Fear and Diamond-Shaped Aerial Light
- 02/27/2007 — Part 1: Mysterious Events At 2005 Tawmsmead Copse "Insectogram" Crop Formation
- 02/14/2007 — Part 3: Tappen, North Dakota, High Strangeness Provokes Many Emails from Viewers and Listeners
- 02/11/2007 — Part 1: Tappen, North Dakota, High Strangeness Provokes Many Emails from Viewers and Listeners
- 02/10/2007 — Part 12: Inside Saucer Post ...3-0 Blue
- 02/08/2007 — Why Do UFOs Sometimes Play Cat and Mouse with Humans?
- 02/07/2007 — Part 11: Inside Saucer Post ...3-0 Blue
- 01/30/2007 — Part 10: Inside Saucer Post ...3-0 Blue
- 01/16/2007 — Part 9: Inside Saucer Post ...3-0 Blue
- 01/02/2007 — Grey Aerial Disk Reported by Chicago O'Hare United Airlines Pilots and Mechanics
- 12/27/2006 — Part 7: Inside Saucer Post ...3-0 Blue
- 12/18/2006 — Part 6: Inside Saucer Post ...3-0 Blue
- 12/14/2006 — Abductee Jim Sparks's Encounter with Reptilian Beings, Their Warning and Possible Agenda
- 12/11/2006 — Part 5: Inside Saucer Post ...3-0 Blue
- 12/06/2006 — Part 4: Inside Saucer Post ...3-0 Blue
- 11/28/2006 — Part 2: Inside Saucer Post ...3-0 Blue
- 11/27/2006 — Inside Saucer Post ...3-0 Blue © 1957 by Leonard H. Stringfield
- 11/03/2006 — Another UFO Retaliation to Radar Lock On - 2003
- 10/28/2006 — Close UFO Encounter by USAF Eyewitnesses
- 10/26/2006 — Norwegian Crashed Disc and Other High Strangeness
- 10/19/2006 — UFO Retaliation to U. S. Army Radar Lock On in Florida, 1967
- 10/14/2006 — Big Sorghum Circle in Beloit, Kansas
- 10/11/2006 — Part 2: Time Travel, Insights from USAF Sergeant and UFO Abductee
- 10/08/2006 — Part 1: Time Travel, Insights from USAF Sergeant and UFO Abductee
- 10/07/2006 — Updated: 1953 Kinross AFB Mystery: F-89 Found in Lake Superior
- 10/02/2006 — Unusual Deaths of Six Female Goats in White Salmon, Washington
- 09/29/2006 — Manipulation of Time and Matter by Non-Humans: The Experiences of Jim Sparks
- 09/20/2006 — Updated: Three Sets of Concentric Rings in South Texas Field
- 09/20/2006 — Animal Mutilations Increase Again in Argentina
- 09/16/2006 — Disc Crash At Cedar Breaks Radar Site, Utah
- 09/05/2006 — Part 2: "Alphonso Lorenzo" - Military Visitor to Another Planet?
- 09/04/2006 — Part 1: "Alphonso Lorenzo" - Military Visitor to Another Planet?
- 07/17/2006 — Area 29 - A Reverse Engineering Center of E. T. Technology?
- 07/01/2006 — Cattle Mutilation and Glowing Discs in Saskatchewan, Canada
- 06/30/2006 — Celestial Secrets: The Hidden History of the Fatima Cover-Up
- 06/29/2006 — Another Horse Suspended in the Air
- 06/28/2006 — Half Cats in Destin, Florida, and Beheaded Animals in Rochester, N. Y.
- 06/22/2006 — Horse Suspended in Mid-Air Near Milan, Italy, Apartment
- 06/18/2006 — Viewer Letters About NASA Airbrushing Photos; EBENs and Reptilian Humanoids
- 06/13/2006 — Mysterious Triangle-Shaped Welts and Bruises
- 06/08/2006 — Part 2: Unexplained Phenomenon of Sudden Human-to-Reptile "Replacement"
- 06/07/2006 — Gary McKinnon: An Electronic "Robin Hood"?
- 05/05/2006 — Military Man's Description of EBE Telepathic Download
- 04/13/2006 — High Strangeness In Skies Near White Sands Missile Range
- 04/03/2006 — Genetic Harvest in Cimarron, New Mexico?
- 03/23/2006 — Part 15 - Peculiar Phenomenon: Early United States Efforts to Collect and Analyze Flying Discs
- 03/23/2006 — Part 2: U.S. Navy Chief Yeoman Describes "Extraterrestrial Biological Entities" in TOP SECRET/MAJIC Photographs
- 02/28/2006 — Part 13 - Peculiar Phenomenon: Early United States Efforts to Collect and Analyze Flying Discs
- 02/27/2006 — Part 4: Military Voices Reply About Government Interaction with UFOs
- 02/23/2006 — Huge Boomerang Craft and Blond Beings
- 02/22/2006 — Part 3: Military Voices Reply About Government Interaction with UFOs
- 02/21/2006 — Part 2: Military Voices Reply About Government Interaction with UFOs
- 02/17/2006 — Updated: White Sands Navy Radar Operator Saw Discs Circle V-2 Rocket Launches

- 02/13/2006 — Mysterious, Aerial Bars of Light Near Brawley, California
- 02/10/2006 — NORAD "Fast Walkers" and "Men In Black"
- 02/10/2006 — Crashed Disc Photos, "Ebens," and Area 51 "Anti-Gravity"
- 02/07/2006 — Military Voices Reply About Government Interaction with UFOs.
- 02/05/2006 — Part 11 - Peculiar Phenomenon: Early United States Efforts to Collect and Analyze Flying Discs
- 01/27/2006 — Part 2: Navy Physicist and USAF Geophysicist Discuss UFOs and ETs
- 01/20/2006 — Part 1: Navy Physicist and USAF Geophysicist Discuss UFOs and ETs
- 01/17/2006 — Part 9 - Peculiar Phenomenon: Early United States Efforts to Collect and Analyze Flying Discs
- 01/13/2006 — 31st Cattle Mutilation on Red Bluff, California Ranch
- 12/21/2005 — Updated: Part 2 - Peculiar Phenomenon, Early United States Efforts to Collect and Analyze Flying Discs
- 12/02/2005 — Abduction by Grey ETs in Huge, Black Triangle
- 12/02/2005 — Former Canadian Minister of Defence Calls for Public Parliament Hearings About UFOs and Extraterrestrials
- 06/02/2005 — Part I - Highly Anomalous Pigment Formation in 2004 Hillsboro, Ohio, Crop Formation
- 06/02/2005 — Part 2 - Highly Anomalous Pigment Formation in 2004 Hillsboro, Ohio, Crop Formation
- 05/26/2005 — Phoenix Barley Mystery: Apparently Irrigation and Wind
- 05/20/2005 — May 2005 Crop Formation Update in Six Countries
- 05/09/2005 — Mysterious Lights and 2003 Serpent Mound Soybean Formation
- 04/14/2005 — "Battle of Los Angeles" On February 25, 1942: When America's 37th Coast Artillery Brigade Fired Off 1,430 Anti-Aircraft Shells At A UFO
- 10/17/2004 — American Crop Formations: 1880-2004
- 09/05/2004 — Part 2 - Hillsboro, Ohio Corn Plant Anomalies
- 09/04/2004 — Hillsboro, Ohio Corn Formation - High Strangeness in Soil and Plants
- 09/02/2004 — Updated Photos: Big, Impressive New Corn Formation in Miamisburg, Ohio
- 08/09/2004 — Pictograms in Poland
- 07/15/2004 — Updated: Part 1-Beyond Hillsboro, Ohio, More Corn Down in New Milford, Connecticut
- 07/06/2004 — Mysteriously Downed Oat Plants in Eagle Grove, Iowa, and Downed Corn in Hillsboro, Ohio

Websites:

Majestic-12 Documents: <http://www.majesticdocuments.com>

Coalition for Freedom of Information: <http://www.freedomofinfo.org/>

Grant Cameron, Canada UFO Researcher: <http://www.presidentialufo.com/>

UFO Casebook: <http://www.ufocasebook.com/>

NUFORC: <http://www.nuforc.org/>

Credits

**Copyright © 1999 - 2009 by Linda Moulton Howe.
All Rights Reserved.
www.earthfiles.com
earthfiles@earthfiles.com**

Republication and dissemination of the contents of this screen or any part of this website are expressly prohibited without prior Earthfiles.com written consent.

**Privacy Policy | Terms & Conditions
Refund Policy**

**Copyright © 1999 - 2009, Earthfiles.com / DigitalEyeCandy.ca
All rights reserved.**